

A World of Radio Cabinet Art



**Early radios had
separate speakers,
so. .**

**. . .let's look at some
of them**



**Elmi "Favorite"
(1928)**



**Philips speaker
"Stars & Stripes"
(1931)**



**Persian King by Doulton
UK (1927)**



**Philips LS speaker
Type 2111 (1928)
Germany**



Spanish angel speaker (1927)



**Philips speaker 2003
(1927)**

Some early European radio speakers



**Balsa Wood
Reproducer
(1929)**
Japanese Art



Plaza Music (1926)



*Design Patented
By L. ROMANELLI*

**Florentine Art Productions
(1925)**



**Radio Foundation
(1926)**



**Farrand Gothic
model 60 (1928)**



**The UTAH Book
Sensation of 1926**



**Utah X-35 speaker
(1929)**

**1925-29
USA
speakers**



**Clara Bierbower
(1866-1955)**

**“Venetian Merchantman” (ca 1927)
Miniature Ship Models**

Ships of Melody (USA)

Speakers were quickly absorbed into the overall radio for the first half of the 20th century.

But with the development of stereo hi-fi, they made a comeback.

THE PHILCO EXCLUSIVE

Fidelitron

ELECTROSTATIC
REPRODUCER



Philco “stereo-phone” swivel speaker (1961)



JBL Paragon Speakers



Radio Cabinet Design Strategies

- **Add Decoration (i.e. via paint)**
- **Vary the Shapes:**
 - Circle, sphere, cylinder, oval, triangle. .
- **Creatively Use “New” Materials:**
 - Repwood
 - Plastic
 - Metal i.e. chrome, aluminum, brass
 - Mirrors
 - Cloth, leather, etc.





“The Expectation”



“The Reality”

Philco model 512 (1928)



Emerson 321 (1934)



Sharp PF116 (1948)



**Pye "Black Box"
(1954)**



RCA 75X17 (1948)



**Stromberg Chinese Classic
designs from 1949-53**

Oriental motif



Crosley 58 "Buddy Boy" (1931)



Emerson 411 (1936)



GE/RCA K51P (1933)

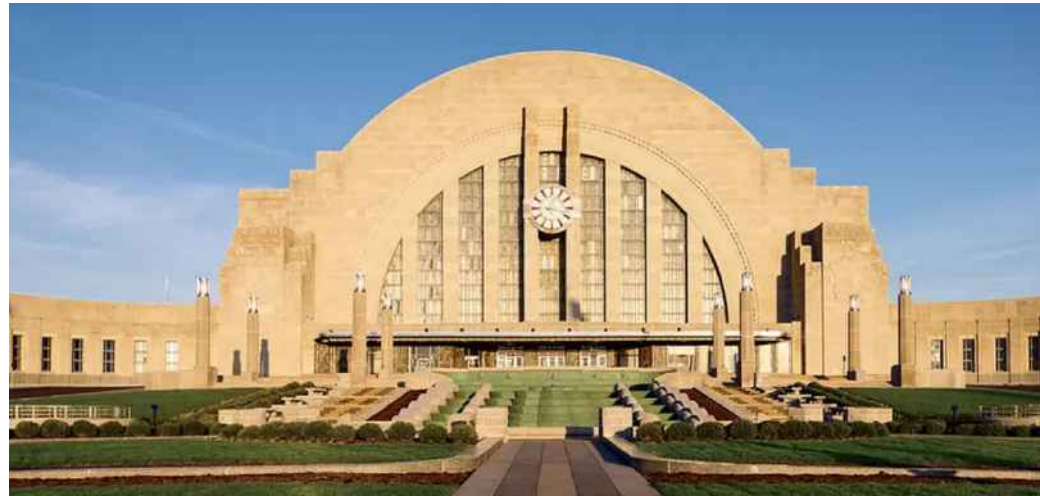
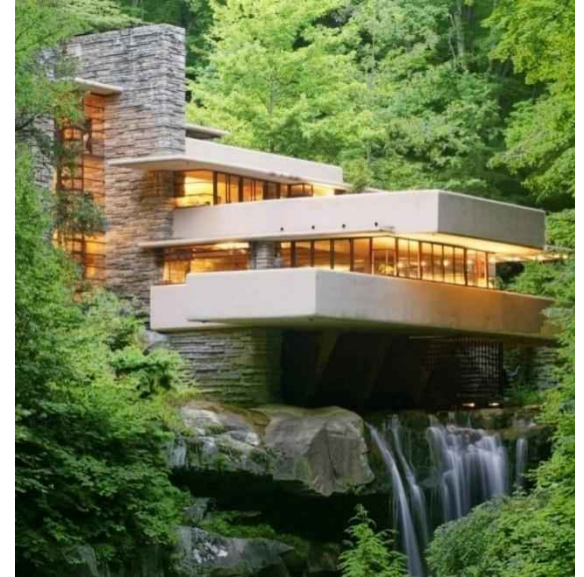
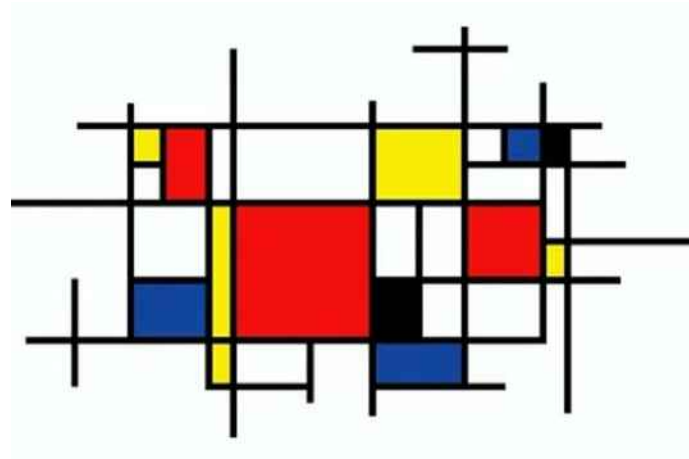


RCA 40X56 (1939)

Repwood Examples

The “Deco Look”

Art Moderne





WR-15



801

Westinghouse Columaire Radios



Savigliano 93 (1938)
Italy



Zenith 811



G-E model M63

Tombstone Radios



Murphy A24 (1934) UK



Amplion (1932) UK



RCA Victor 124
(1934)



Majestic "Park Ave."



Majestic "Lido" 777



Stromberg Carlson 66



**Aristocrat (?) 1935
Midwest ?**



**Pacific "Elite" (1934)
New Zealand**

Deco Consoles



**Radialva TO56 (1936)
France**



Metal Grilles



model 500



model 59



model 501



model 55



model 450



model 161



model 149



model 174

Majestic Deco Radios with chrome grille trim



**DAF (1938)
Germany**



Detrola 568-1 (ca 1946)

Metal Cases

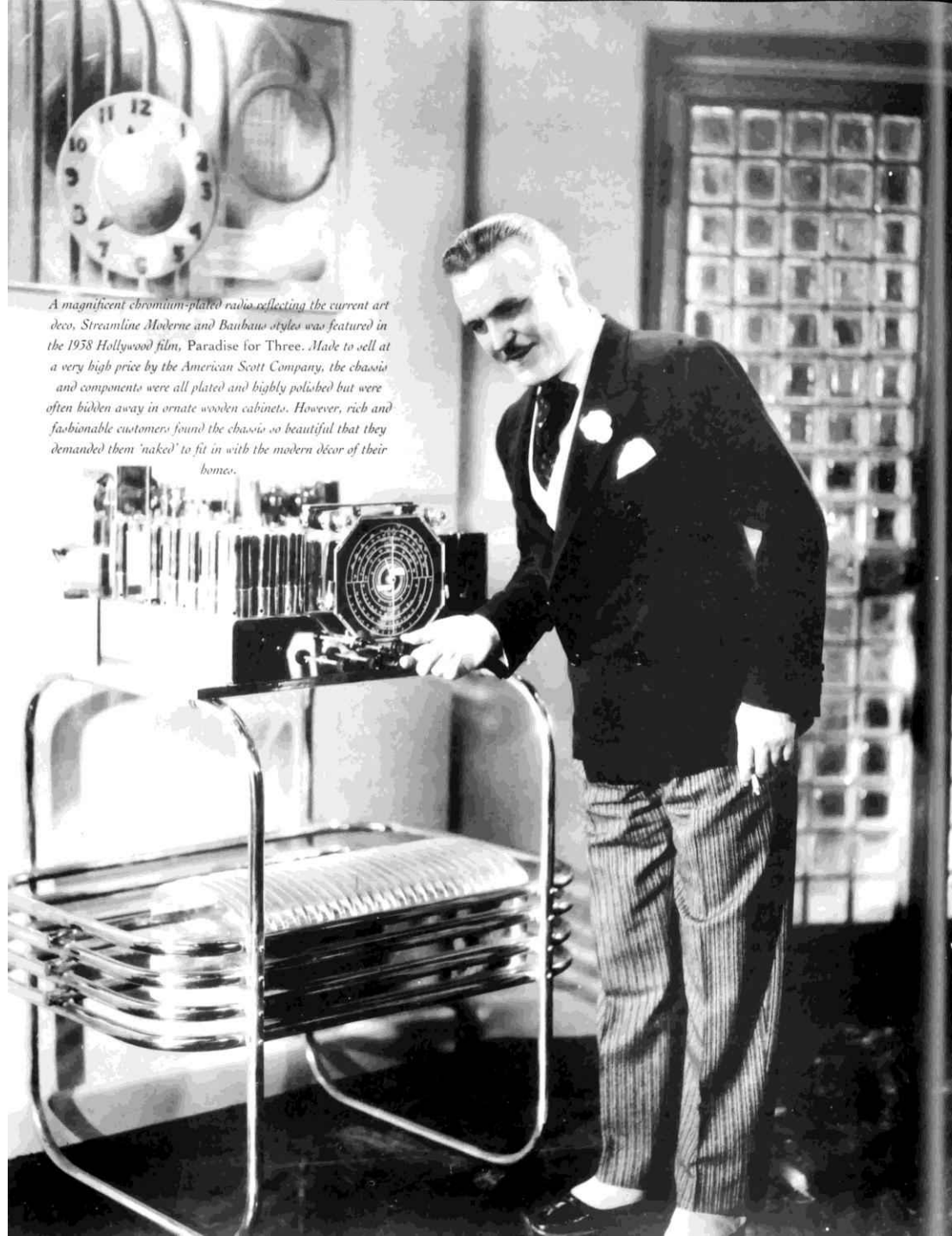


Sparton 5470 (1940)



BrionVega RR126 (1966) Italy

A magnificent chromium-plated radio reflecting the current art deco, Streamline Moderne and Bauhaus styles was featured in the 1938 Hollywood film, Paradise for Three. Made to sell at a very high price by the American Scott Company, the chassis and components were all plated and highly polished but were often hidden away in ornate wooden cabinets. However, rich and fashionable customers found the chassis so beautiful that they demanded them 'naked' to fit in with the modern décor of their homes.





Hyperbo 5 (1934)
Bang & Olufsen
(Sweden)



6K10



9K10 (1936)

RCA designs by John Vassos

Tubular Chrome Moderne Designs



Air King 771



Fisk Skyscraper (Australia)



Philco UA-52P (1939)



RCA 96X (1939)



Cyarts B (1947)

Deco Style in Plastic



**British Ultra (1953)
Coronation set (UK)**



**Jewel handbags (1957)
UK**



**Philco "Mustang"
"Rough Rider"**



**RCA RJG30
bean bag**



Lawrence "bagpipe"

Table Radios in Other Materials



Ingraham's Cabinets



General Electric L-633



Emerson 256 "strad"



Zenith 6D526



Stromberg 1000-J



Sparton 6218 "lobster"



Stewart Warner 91-51 (1940)

Ingraham made beautiful cabinets for Emerson & others



Oval Shapes



**Emric "L'emric" 638A
France (1938)**



Philco KR5 (1942)



Emerson 106 (1935)



Trav-ler 442 (1936)



Rubis 70 (1933) Belgium



Silver 139 (1937)

Oval table top sets



**Grigsby Grunow 1291
(similar to model 1541)**



Stewart Warner 1865



Motorola model 9A



Mendelssohn chairside



Emerson AP-174



Zenith 9S263

Oval Consoles



Regent 5W0 (1950)



Interesting chairside from New Zealand



Half Ovals



**Stromberg 231R
(mirror top)**



Stromberg 240R (1937)



Stewart Warner 91-536



Zenith 10S452

Half-Round



Zenith 6S238



Cathedrals

Cathedrals & Teardrops



Detrola 302 CR (1939)



Aircastle "Diamond Jubilee"



Climax Ruby (1937)



Philips 930A (1931-32)



Sears 132.2078 (1960)



Panasonic RC-1091 (1968)



Circles



Silver Circle 159 (1937)



Detrola model 105



**Wilcox-Gay
model A-17 c. 1937**

Circular Designs



**General Radio
Telexsa #5A (1938)**



**Brunswick drum table
models 2689 & 4580**



Ekco AD65 UK (1934)



**Sparton 566 (1936)
"Bluebird"**



**Emerson BD-197 (1938)
"Mae West"**



**Eveready (UK) (1949)
"saucepan special"**

More Circles



**Stewart Warner R192
headlight radio (1936)**



**EMG radio (1940)
(Mexico)**



**Setchell-Carlson "Jet"
(1949)**



Cylinders & Barrels

Barrels



Tiffany Tone Riviera 113 (1936)



RK Keg radio (1933)



Motorola model 9R (1937)



Espey 31 (1950)



Satchell Carlson 570 (1948)



Emerson AR-177 (1936)



Darth Vader



Emerson 744 (1954)



RCA 1X591 (1953)



**Odeon 5D-152 (1946)
Argentina
[same as Belmont 4B115]**



RCA 9X971 (1950)



Emerson 808 (1955)

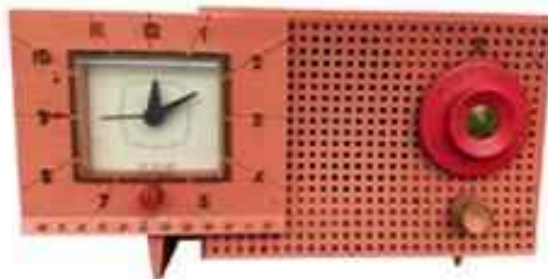
Darth Vader-style (?) Radios



Split Level Designs



Capehart 6TC20



Westinghouse H540 (1955)



Philco 53-563



Westinghouse H583T5

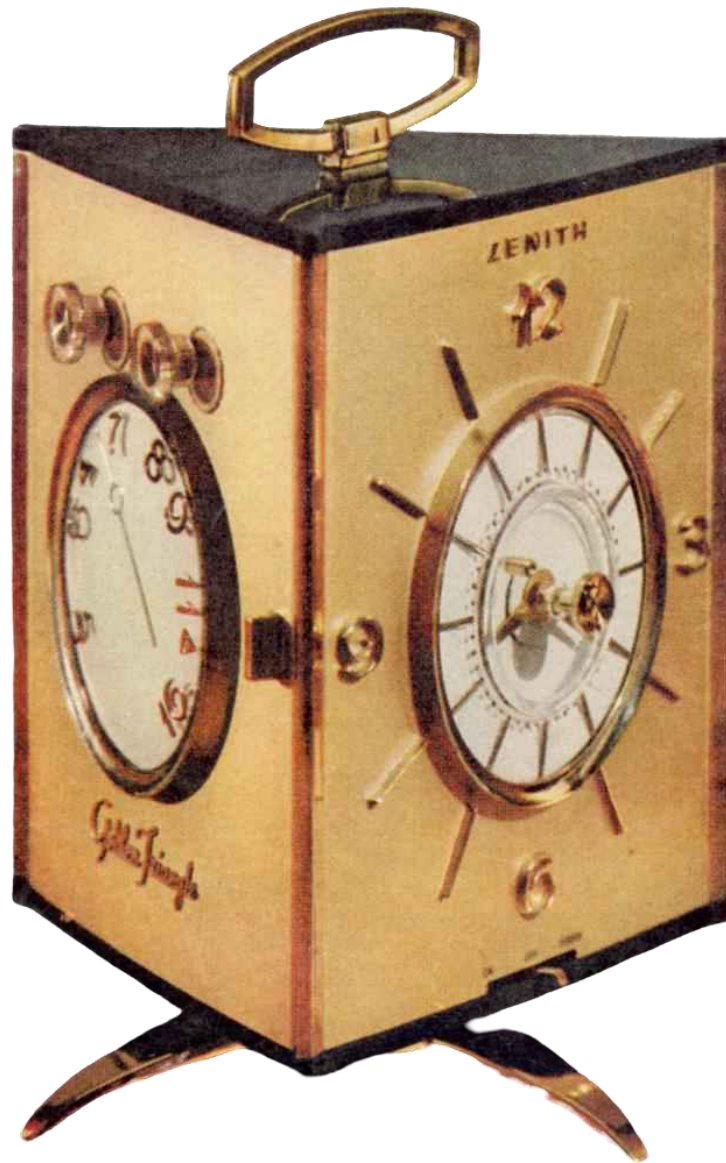


GE 914D



GE 475

Split Level Radios of the 50s Reflect the Suburbs



Triangles



Zenith K615B



Silvertone 57B-7045 (1967)



RCA 1X4HE



GEC 861 (1959)



AWA Radiola B15
(Australia)

Triangular Shapes 1950s-60s

Kuba Komet
Germany 1957-1962
W. Germany





Globes and Spheres



Globetrotter (1940)



**Sonora
Globe Navigator (1940)**



Peerless (1960)



**Champion Venus (1947)
(UK)**



Trophy ball (1942)



**Toshiba 6TR-92
"rice bowl" (1958)**



**Toshiba 6TP-515A
(1963)**

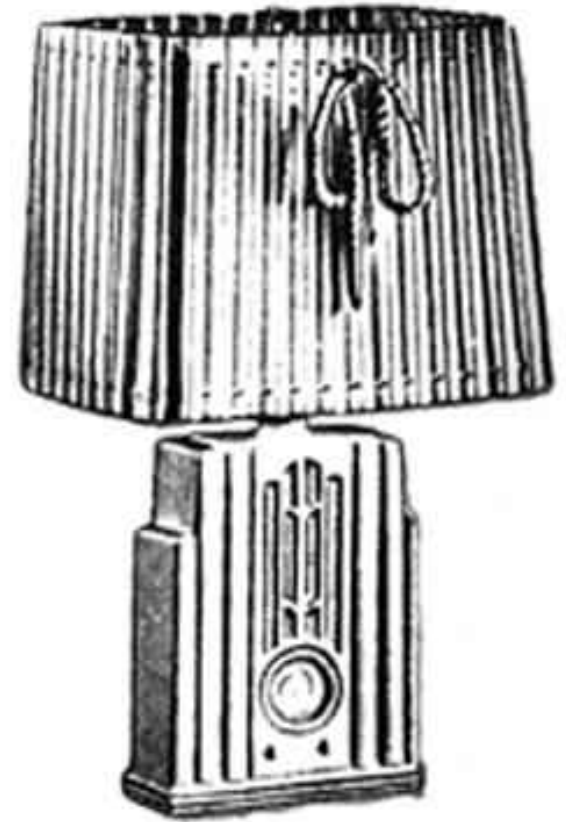
Globes & Spheres



Moss XT-852



Unknown 1950s



Airlite

PREMIUM LAMP, c. 1938

CERAMIC

Multifunction Lamp Radios



Detrola 104 desk set (1936)



Executive brass desk set radio (1949)



Sengbusch Airite desk set (1936)



Emerson 804A (1954)

Multifunction Desk Sets

What About Canadian Designs?



Addison 2A (Canada) 1946

The round sound



Clairtone's Project G & G2

The Future NOW!



**Circa '75 Model 701
(1967)**



**Circa '75 Model 703 \$599
Sound Chair (Model 704) \$299**



Circa 711 (1971) Saturn/Apollo

This may very well be the most remarkable piece of modern sculpture outside the National Gallery. It's definitely the most remarkable stereo you've ever seen. Outside of anywhere.

That's right. Stereo. More to the point, the Electrohome CIRCA 711 stereo.

Inside the smoked glass bubble—shades of 2001!—is a 40 watt Electrohome stereo chassis, AM/FM stereo radio, and BSR mini-changer.

Yes, that's a brushed-chrome pedestal and base slimly yet surely supporting the bubble.

And those moon-like baubles on either side? High compliance speakers that provide up to twenty feet of smooth

stereo separation. In fact, if there's anything more impressive than the styling of the CIRCA 711, it's the performance of the CIRCA 711. After all, designing a stereo that looks like nothing else is one thing. Engineering it to sound like an Electrohome stereo is another.

You'll be pleased to know we've succeeded on both counts. You'll also be pleased to know the CIRCA 711 is priced within the reach of everyone. So jet down to your Electrohome dealer and get yourself overwhelmed with the most astounding stereo you're likely to see this decade. As a stereo set, it's a knockout. And as a piece of sculpture it's a bargain.

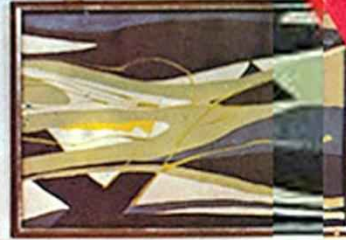
Electrohome Limited, Kitchener, Ontario.

ELECTROHOME

STEREO LAYS AN EGG!

**STEREO LAYS
AN EGG!**

(and look how it sounds!)



the **AUDIO EGGs**

MODEL 2000 AUDIO EGG

\$399⁰⁰*

The new shape of sound.®
Weltron





RCA RDZ-311Y (1970)



Dumont 900 (1963)

Modern Art meets Pop Art in Space



GE T146A (1959)



Arvin 9595

Attention, Earth People.



Panasonic TV 1971



GE P2765
space ball (1972)



JVC capsule TV



Magnavox 1R1020
1972



GE P2775A (1970)



JVC helmet TV
from 1971

Space-Age Design



For Alessi (Italy)



Coo Coo for Alessi and Saba



for Lexon

1990's-2000's Designs by Phillippe Starck

The End

Audio-Technica's new \$9,999 turntable levitates and glows



The Hotaru turntable glows in several different modes and color palettes. Image: Audio-Technica

/ Using magnets the upper section of the Hotaru turntable floats to reduce vibrations that could affect playback.

by [Andrew Liszewski](#)

Apr 17, 2025, 10:09 AM EDT



14

Comments (14 New)