

Upstate N.Y. Radio Manufacturers

A Quick Overview

RADIOACTIVITY 2015

Dave Harris

All American Mohawk, Rauland Lyric Corp

1929-Taken over by Wurlitzer of N. Tonawanda N.Y.

1920 – All American Electrical Manufactures founded by E.N. Rauland in Chicago.

1920 – Mohawk Electric Corp founded in Chicago.

1922 - All American Electrical Manufacturers changed to All American Radio Corp.

1924 - Mohawk Electric Corp becomes Mohawk Corp of Illinois.

1927 - All American Radio Corp and Mohawk Corp unite to become the All American Mohawk Corp.

1929 – E. N. Rauland forms Rauland Corp → Zenith '48

All American Mohawk, Rauland Lyric Model R Standard Cabinet



All American Mohawk, Rauland Lyric



LYRIC B6L CA1935

6 TUBES, 1 BAND, DC

All American Mohawk Corporation

LYRIC RADIO

Now establishes a
new high standard
of perfection ... and

Opens wide the doors
to joys you have
missed in radio.

Here is the greatest advancement ever scored in the field of radio—the exact duplication of all sound, all tones. You can't realize what a remarkable improvement has been made in tone quality until your own ears have registered the delicate gradation of sound in the new All American Mohawk Corporation Lyric Radios. The elimination of all that is suggestive of an artificial element, not voices laced with mechanical harshness, but sound, *melody* in its real value—just as you would hear it within speaking distance.

There is beauty of cabinet design and finish as gratifying as their mechanical excellence. A wide variety of models to suit every requirement as well as Phonograph and Radio combinations.

Prices range from

\$92.50 to \$425 Less
Tubes

*NEXT CHRISTMAS You Will Be Glad If
You Purchased an All American Mohawk
Corporation Lyric Radio This Christmas*

Select Your Radio for Christmas
From New York's Finest Music Store

Better Terms—Better Service—
Better Delivery

OPEN
EVENINGS
UNTIL
10
O'CLOCK

WURLITZER

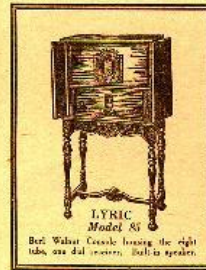
120 West 42nd Street Between Broadway and Sixth Avenue



LYRIC
Model 84
Hardwood Spanish Curved Cabinet
Eight Tubes, Built-in speaker



LYRIC
Model 85
All Electric Radio-Phono-
graph combination. Light
tube, one dial receiver. Dynamic speaker.



LYRIC
Model 86
Best Walnut Gracile housing the eight
tube, one dial receiver. Built-in speaker.



LYRIC
Model 88
An attractive Walnut Veneer Table
Model: hand-cabinet piano finish.
Illustrated one dial, six tubes, com-
pact receiving receiver.

Please send me additional literature.
I am interested in the following models:
Name _____
Address _____
City _____ State _____

Colonial Radio Co

Long Island, N.Y.

Formed from Cutting and Washington in 1924 after Cutting and Washington was sued by Westinghouse for patent infringement on Armstrong patent. Colonial took over Valley Appliance in Rochester, N.Y. and King Radio in 1930 and closed Valley and all King plants in 1931 except the Buffalo plant.

First contract with Sears in 1930.

Colonial Radio

Produced military radios during WWII.

Brands: Sears Silvertone, Graybar Electric, Firestone, Goodyear, General Motors, Chrysler, and Dunlop.

Silvertone Model 4569



Federal Radio Corp

Buffalo, N.Y.

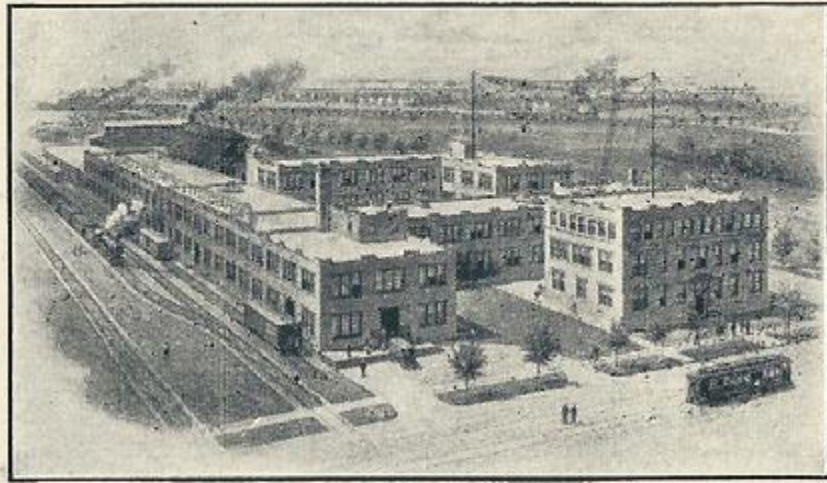
A division of Federal Telephone and Telegraph Corp in Buffalo, N.Y.

Founded ? Listed in EMF Electrical Year Book Volume 1 (1921) as a manufacturer of telephone, telegraph, and radio apparatus (including tubes).

Brand: Orthosonic

Federal Telephone & Telegraph

1738 Elmwood Avenue, Buffalo, N.Y. - Birthplace of WGR Radio – May 22, 1922 – Still on the air!



Federal Factory

Birthplace of WGR and All Federal Radio Apparatus

Buffalo, N. Y.

1738 Elmwood Ave



1738 Elmwood Ave



Orthosonic A-10 (1925)



Orthosonic E-10 (1926)



General Electric Co

1892 – Formed by merger of Edison General Electric (lamps and systems (DC) and Thomson-Houston Co. (arc lighting and electrical systems (AC) with main office in Schenectady, N.Y.

1900 – Permanent research lab set up in Schenectady, N.Y.

1901 – High speed steam driven turbine developed – 500Kw 1,200rpm generator

General Electric Co

1905 – Electric toaster

1906 – Electric range

1911 – Commercial refrigerator

1912 – Electron tubes

1919 – Magnetron developed

1919 – With AT&T & Westinghouse, set up RCA,
GE uses RCA for radio sales

1922–Radio station WGY in Schenectady 1500w

General Electric Co

1927 – First TV broadcast from WGY

1930 – GE withdraws from RCA – antitrust issues,
GE now markets radios under GE brand

1940 – GE relays TV broadcasts from NYC on WRGB,
first of a network.

1947 – Builds Electronics Park in Syracuse N.Y.

155 acres, 19,000 employees

Blg 5 makes consumer radio and TV products

1980 – Ceased consumer manufacturing at
Electronics Park

General Electric Co A-63 (1937)



General Electric Co A-75 (1935)



King Manufacturing Corp

1924 – Founded

Changed names...

1925 – King Quality Products

1926 – King Hinners Radio Co.

1926-27 – King-Buffalo, Inc.

1927-30 – King Manufacturing Corp.

Taken over by Colonial Radio in 1930

King-Hinners Neutrodyne (1925)



Stromberg-Carlson

Rochester, N.Y.

1894 – Founded by two Chicago Bell Telephone employees, Alfred Stromberg and Andrew Carlson, in Chicago. Patents expired on Alexander Graham Bell's telephone. Stromberg-Carlson improves telephones and is stable in pricing.

1904 – Home Telephone Co. purchases SC and moves company to Rochester, N.Y.

Stromberg-Carlson

1917-WWI – SC makes phones and switchboards for military use.

1923-SC starts making Neutrodyne radios.

1927-SC buys RCA license and starts making high quality superheterodyne radios.

1927-SC buys WHAM, still on @ 1180kc at 50Kw.

1939-SC adds TV and FM radios to product line.

Stromberg-Carlson

1941 – SC makes military phones, switchboards, and communications gear including the BC-348.

1955 – SC merges with General Dynamics.

1956 – SC ends radio and TV production.

1961 – SC ends hi-fi production.

1982 – SC sells off telephone and key system business to Comdial.

1991 – SC merged with Siemens

Stromberg-Carlson 1A (1924)



Stromberg-Carlson 501-A (1925)



Stromberg-Carlson 125H (1936)



Rudolph Wurlitzer Co

North Tonawanda, N.Y.

1856 – Founded by Rudolph Wurlitzer in Cincinnati to import musical instruments to U.S. from Germany.

1880 – Starts to manufacture pianos.

1908 – Takes over DeKleist Musical Instrument Co of North Tonawanda, N.Y. and moves production to North Tonawanda, N.Y.

1929 – Takes over production of All American Mohawk Radio Co (Lyric) of Chicago.

Rudolph Wurlitzer Co

1929

